

*Laboratory for Plasma and Fusion Energy Studies
Division of Mathematical and Physical Sciences
and Engineering
University of Maryland, College Park
cordially invites you to attend its
Open House
in celebration of its move into the new
Energy Research Building
on Friday, November 6th, 1981
3 p.m. to 6 p.m.
Paint Branch Drive
Parking on Lot 11*

R.S.V.P. (301) 454-7085

Sent to Roy Hibbert & Pat Ross
MPSE Energy Research Laboratory Completed - Open House 3:00 - 6:00 p.m.

November 6, 1981

The construction of the new addition to the Energy Research Building was finally completed in July. The Physics and Astronomy Plasma Group and Electrical Engineering Charged Particle Beam Group of the Laboratory for Plasma and Fusion Energy Studies have completed their move into their new facilities. The new building will provide research laboratories and offices for plasma and fusion energy studies. To commemorate the new facilities an Open House will be held on November 6, 1981 from 3:00 to 6:00 p.m.

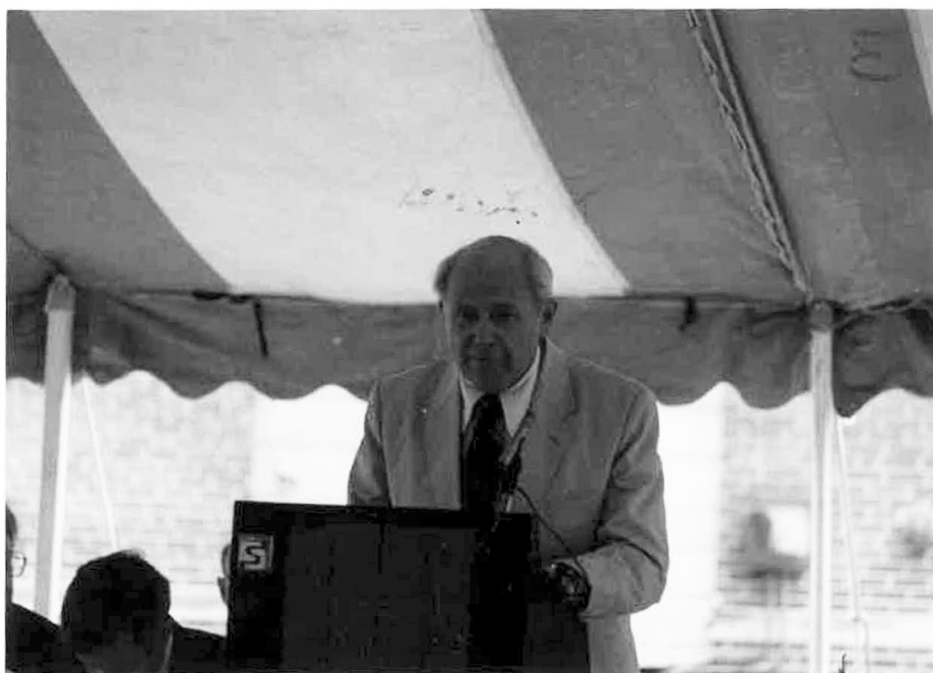
This new facility is part of the University's commitment to developing an outstanding graduate education program in parallel with an excellent research program. This new building will enable the Plasma and Fusion Energy Studies Program to not only maintain its position in this particular scientific field but to respond to the scientific and educational challenges of today.

The research into basic plasma and fusion phenomena and the development of the necessary diagnostics to study these phenomena will now have the additional modern laboratory and support facilities necessary to continue the present research. The new research facilities will help to meet the need for more space that the increased emphasis on graduate education and research has brought.

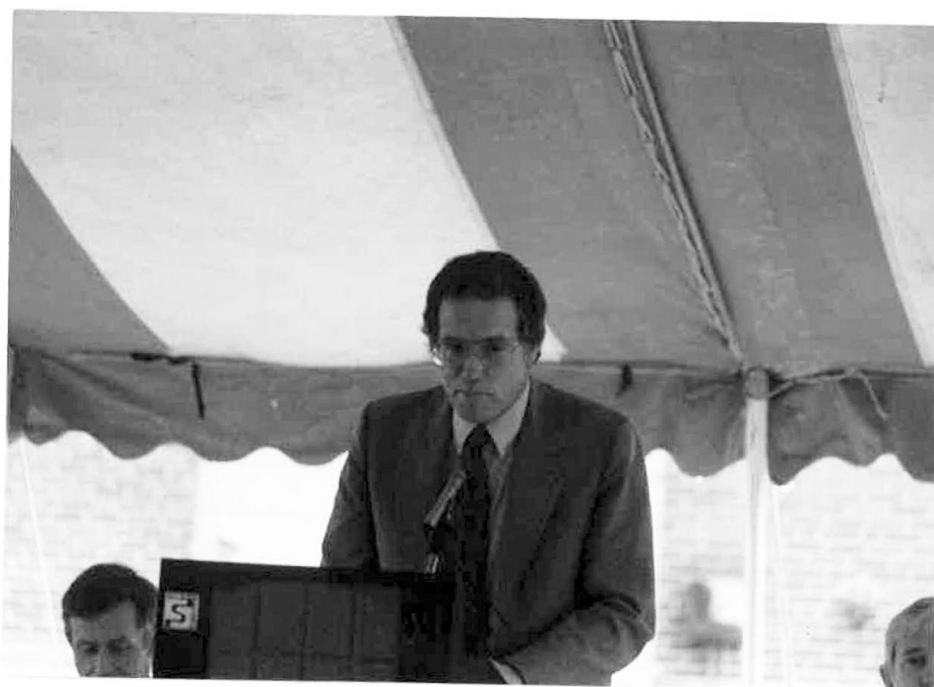
The 35,000 feet of new space in the addition will promote more cohesiveness for the Program. It brings together researchers and students who were formerly split between the Space Science Building, the

old portion of the Energy Research and a Quonset hut. The logistical support for the Program will now be simplified. The building has been designed to provide the unique laboratory space required, such as very heavy floor loading, high capacity electrical service, precise temperature and humidity control, high ceilings, effective electrical grounding system, etc.

The expert and diligent work of Clas, Riggs, Owens, and Ramos, the architect, is very much appreciated. They were very responsive to the quality laboratory building. Kora & Williams, the general contractor, has provided a quality constructed building that has been well received by the Laboratory members.



Professor John Toll, President
University of Maryland College Park



Professor William Kirwan, Vice Chancellor
University of Maryland College Park



Dr. Alvin Trivelpiece, Director
Office of Energy Research
Department of Energy



Prof. Hans R. Griem, First Director
Laboratory for Plasma and Fusion Energy Studies



Florence Decker
Administrative Assistant to the Director



Lorraine Calabong and Ivah Washabaugh
Administrative Staff



Carol Arsenault, Mohini Kaul
Administrative Staff



Bill Destler, Martin Reiser, Dennis Papadopoulos,
Chuan Sheng Liu (first row, right)



Front row: William Jenne, Financial Director
 Back rows: --, George Goldenbaum, Dave Miller,
 Alan DeSilva, Raymond Elton



Front row: Derek Boyd, Celso Grebogi
 Second row: Alan DeSilva, Raymond Elton
 Third row: John Antoniadis, --, Doug Cohen



First row: Celso Grebogi

Third row: --, Robert Kleva, Dottie Brosius